

Cable Ducts

b/s/t PVC Energy Supply Duct WD

Stacking element

Specification ← **Material**
PVC-U, high impact strength,
UV-stabilised

Special model*
Maximum base plate inclination
of 25° for DN 50 – 150

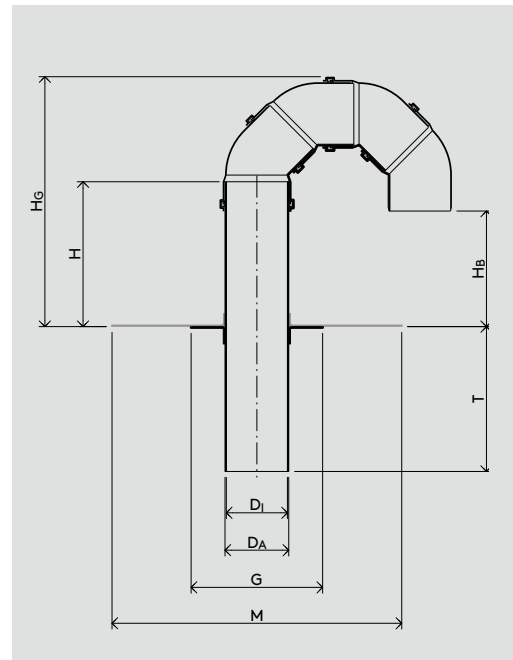
Maximum pipe length
max. 1000 mm

Note
Model with four 45° PVC elbow pipes

Membrane flange
PVC, EVA (see page 158)

INFO Please order ←
membrane
flange
separately

Special models ←
on request*



WG 1117 ←

Nominal Width	Product No.	$D_A \emptyset$ [mm]	$D_I \emptyset$ [mm]	G [mm]	M [mm]	H [mm]	H_G [mm]	H_B [mm]	T [mm]
DN 100	143-WD100	110	105.4	230	500	250	420	190	250
DN 125	143-WD125	125	120.0	230	500	250	450	190	250
DN 150	143-WD150	160	153.6	280	500	300	550	230	250

* Custom-made products cannot be returned.
Status: 03/22 b/s/t GmbH Koch Kunststofftechnologie reserves the right to make technical modifications.